



COMHAIRLE CONTAE
CHEATHARLACH
CARLOW COUNTY COUNCIL

**SECTION 75 ROADS ACT 1993
S.I. No. 119/1994 ROADS REGULATIONS 1994**

**TEMPORARY CLOSURE OF ROADS
NOTICE OF DECISION**

ROAD: KELLIS LANE, RATHOE, CO. CARLOW (L-30353)





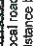
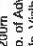
Carlow County Council having given the required notice intend to temporarily close the above road to facilitate Kendra Civil Engineering Ireland Ltd in carrying out essential maintenance works for the grid connection from the Garreenleen Solar Farm Substation to the ESB substation at Kellis.

Dates of Closure: 17th March 2025 – 6th April 2025 From: 24-hr To: 24-hr

No alternative routes are available but local access will be maintained throughout the works.

**Pádraig O’Gorman,
Director of Services.**

Legend

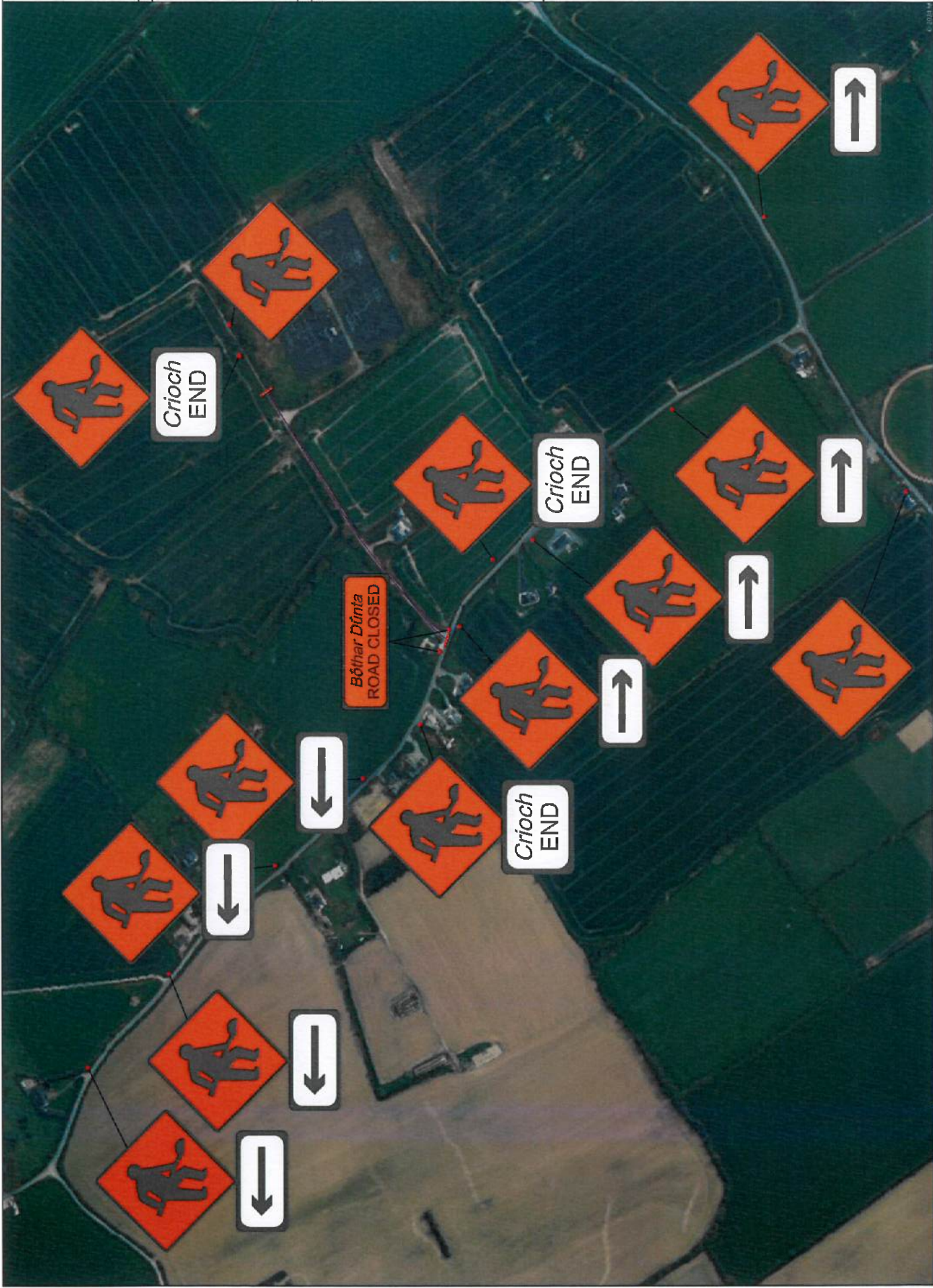
-  Works Zone
-  Diversion Route
-  Traffic Cone
-  Closed Section of Road
-  Longitudinal Safety Area
-  Chevron Barrier
-  Cone mounted sign


Parameters:

1. Local road speed - 80km/h
2. Distance between Advance signs - 200m
3. No. of Advance signs - 4
4. Min. Visibility of signs - 120m
5. Longitudinal Safety Zone - 60m
6. Lateral Safety Zone - 12m
7. Lead in Taper - 45 degree
8. Max. at taper cone spacing - 3m
9. Min. at longitudinal cone spacing - 12m
10. Traffic Flow is Road Closure

Notes:

1. All signs to comply with Chapter 8
2. Exact sign positions to be agreed on site
3. Safety zones to be maintained at all times
4. Signs to be positioned so as not to obstruct other road users.
5. Min. Line width to be maintained at 3m at all times, 3.25m where possible
6. End of Road Works signs to be placed within 20m of works area end.
7. Existing Signage to be covered whilst T/M in operation.
8. Marshalls at both end of Road Closure.
9. Steel Road Plates to be on site, ready for use to allow Residents access



	Rev: 00	Description: E-SB Connection	Date: 04/12/2024	Job Details: Garraheen Solar Farm - 110KV Grid Route	Drawing: Traffic Management details - Keilis Lane (L30353), Road Closure from junction of L1025/L3035, (62.767409213159535, -6.82251986587896)	Dwg no: 01 - Plan
						Rev: 00
						Scale: N.T.S
						Date: 04/12/2024
						Sheet: 1 of 1